

The Amazing Race Canada: History Edition

Culminating Assignment



You are on the CTV production team of a new version of *The Amazing Race Canada*: the Canadian History version. You will plan an amazing race and answer the following questions: **What are significant moments in shaping Canada's identity through the twentieth and twenty-first centuries? What are Canada's identities?**

You must employ the pillars of historical thinking in your activities.

As the producers of the show, you need to:

- Design an amazing race around Canada and the world that highlights key moments in Canadian history.
- Pick events from among the four time periods we have explored in Canadian history (1914-29, 1929-45, 1945-82, 1982-present), taking racers to places associated with those events.
 - **You must include three (3) different places with three tasks from different periods. If the locations are in Canada, make sure to identify the Indigenous territory they are located in (This website can help: <https://native-land.ca/>)**
 - Be specific about the places. Use internet maps to find places (buildings, parks, intersections of streets, etc.) for tasks to occur. Review facts of key events in 'Route Info Markers.'
- Design a challenge to be completed in a 'Roadblock' (activity).
- Design your challenges to reveal meaningful facts and use two of historical pillars in each stop. In the write-up, include pictures (Google Earth, historical pictures, etc.) to help reinforce your tasks.
 - Label the pillars in your write-up: Two pillars per task.
- Create a cover page that has a map of the world, as well as all places labelled from your race.
- Your final product must be on a Google Doc or a Word Doc and must be submitted to the Dropbox on The Hub.

Possible activities:

Teach something, perform something, create something, build something, do something, find something, memorize something, etc.

<p>Where? When? (1914-29, 1929-45 1945-82, 1982- present)</p> <p>Place and time -Be specific with the 'Route Info', the term used in the show.</p>	<p>What? Activity- 'Roadblock' in the show's terminology--explain what will be learned</p>	<p>How? Details of Activity or Performance</p>	<p>How are Two Pillars Demonstrated?</p>

Sample Task Sheet for one location

Stop #	1
Timeperiod	1982-present
Historical Pillars	Historical Significance and Ethical Dimensions
Location	Platinum Jubilee Garden in Yellowknife, NWT
Indigenous Territory	Tłı̨chǫ̀ Ndè Akaitcho Dehcho Dene Michif Piyii (Métis) Denendeh (Dënësų́líné Nënë́) Dënë́ndeh



Directions: For their first activity contestants will need to fly from Toronto Pearson International Airport to the Yellowknife Airport where they will find a Tesla Model Y waiting for them in the airport parking lot.

Contestants will drive their Tesla Model Y into the City of Yellowknife and locate the headquarters of *Joint Task Force North* at 4816 49 St, Yellowknife, NT X1A 2R3. Once there, contests need to locate the **Platinum Jubilee Treaty Garden** that was planted on the grounds of *Joint Task Force North* in May of 2022.



Map of Joint Task Force North showing the location of the Platinum Jubilee Treaty Garden.

Roadblock (Activity) Information: Dedicated by King Charles III and Queen Camilla during their visit to the City of Yellowknife as Prince of Wales and Duchess of Cornwall in 2022, the **Platinum Jubilee Treaty Garden** is one of 13 such gardens planted across the country during the Platinum Jubilee (70 years on the throne) of Queen Elizabeth II. The garden is meant to highlight the Treaty Relationship between the Sovereign and Indigenous Nations. Watch this video exploring the garden [here](#).

Planted by Commissioner Margaret Thom (of the Dene Nation) and members of the Canadian Armed Forces, the primary colour of the flowers used is orange to remind people of the Indigenous children forcibly removed from their families and taken to residential schools – many children did not return home. Canada's residential school program violated Treaty and other critical Crown-Indigenous relationships.

When Commissioner Thom gifted teachings to the King and Queen during their visit, she made sure to explain to them about the different medicines and flowers planted in the garden. The medicines planted in the garden are:

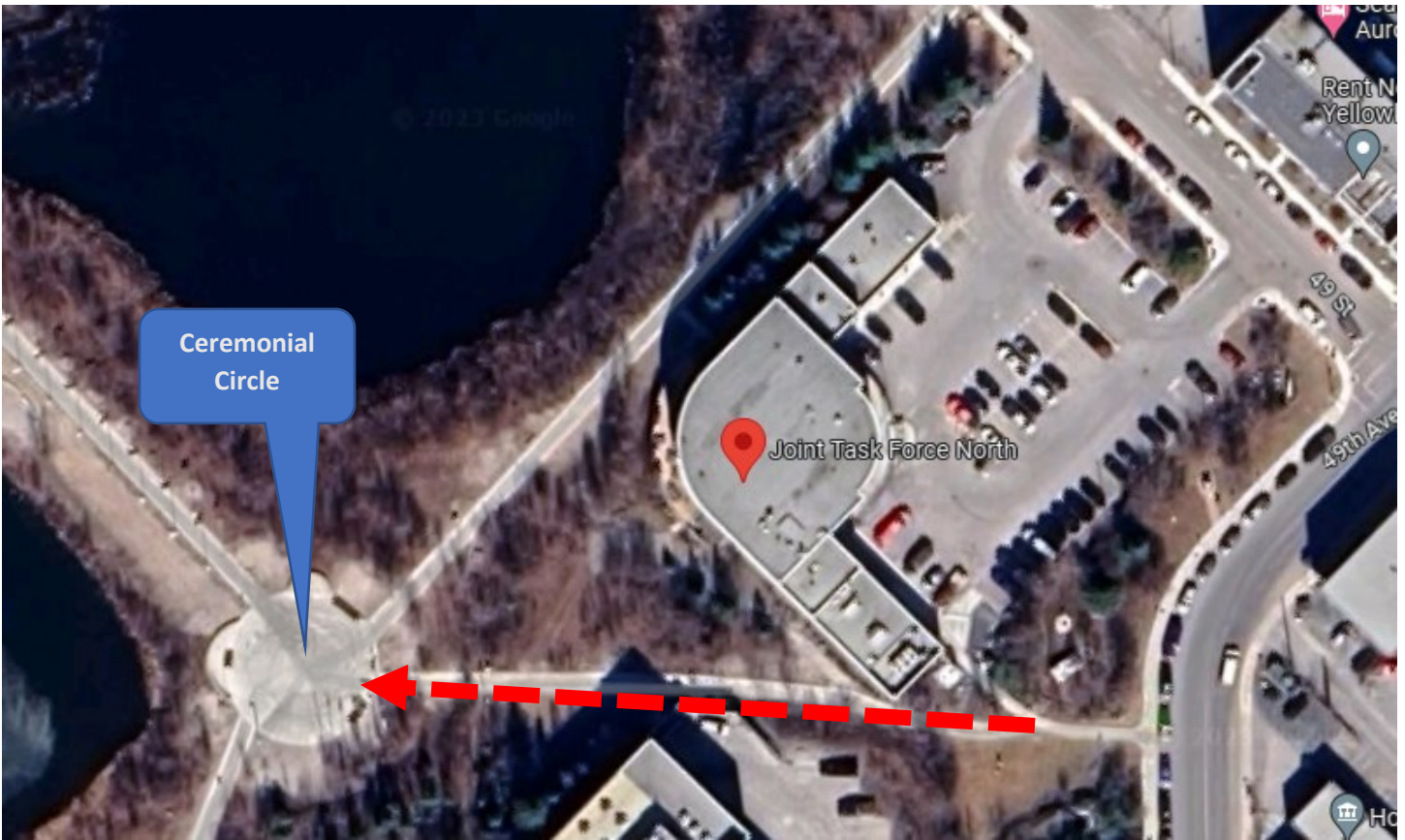
- Sage
- Cedar
- Tobacco



The King and Queen (then Prince of Wales and Duchess of Cornwall) are shown the Yellowknife Platinum Jubilee Treaty Garden. Commissioner Margaret Thom stands on the far-right.

Task: Contestants must locate the three medicines (sage, cedar & tobacco) in the **Platinum Jubilee Treaty Garden**, take pictures of their leaves and make their way to the **Ceremonial Circle** nearby. There they will find an elder who will look at the pictures to see if the contestants have successfully identified the right medicines.





Once the elder is satisfied teams will be given their clues for the next leg of the race.

Historical Thinking Concepts:

<p>Historical Significance</p>	<p>The Platinum Jubilee Treaty Garden is significant because it highlights the Treaty relationship with the Crown and how it was violated by, among other things, Canada’s Residential School Program. Treaty relationships were meant to be the foundation of Indigenous and Non-Indigenous Peoples living together on this land and this is something that Canadians are rediscovering in the 21st century. Projects like this one highlight the history and significance of Treaties, challenging Canadians to act to build a better society that was envisioned by these critical relationships.</p>
<p>Ethical Dimension</p>	<p>The Final Report of the Truth and Reconciliation Commission provides Canadians with an accounting of what happened concerning Canada’s Residential School Program, as well as a roadmap for the future (including 96 Calls to Action). This garden seems to answer Call #79. It is our responsibility to know this history and live up to our responsibilities as Treaty members.</p>